

# EEXI SUPPORT SERVICE

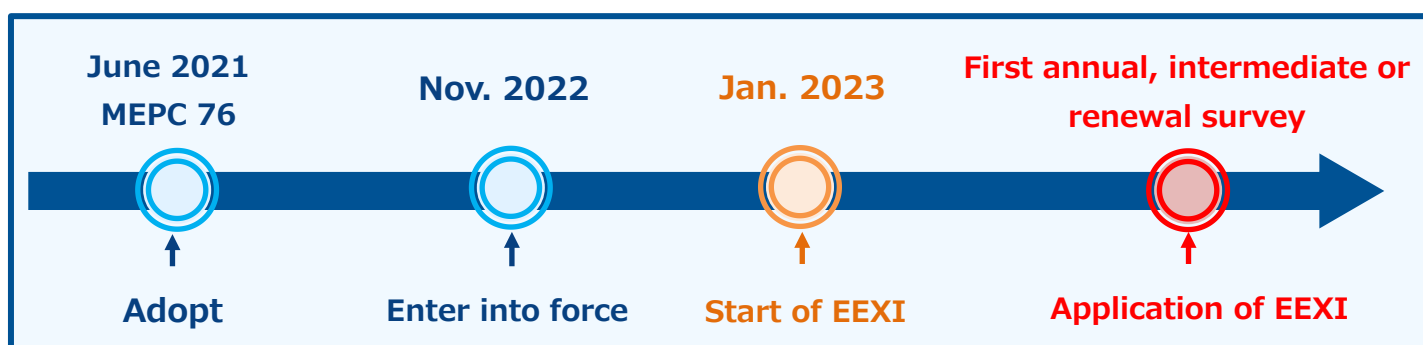


## Providing the solution to comply with EEXI requirements

EEXI requirements based on the amendments to MARPOL ANNEX VI will start from 1st January 2023. ClassNK Consulting Service offer a comprehensive solution such as EEXI assessment and (if necessary) Engine Power Limitation (EPL) for obtaining EEXI certification in cooperation with shipyards and engine manufacturers.

### Outlines of the EEXI regulation

- ◆ EEXI requirements shall apply to all ships of 400 GT and above which are engaged in the international voyages regardless of ship's delivery date
- ◆ Required EEXI is determined according to type of ship and size(DWT).
- ◆ Timeline of EEXI regulation is as follows.

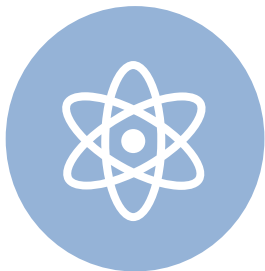


## Contents of EEXI support services



### **A. EEXI assessments**

1. Simple assessment of EEXI as a first step  
Simply assess the attained EEXI and the limited maximum engine power  $MCR_{lim}$  after EPL using the ship speed by simple formula and the default value of SFC as a first step
2. Specific assessment of EEXI  
Exactly assess the attained EEXI and the limited maximum engine power  $MCR_{lim}$  after EPL using the ship speed based on tank tests and the SFC obtained from shop tests



### **B. Offer and provide the best solution for regulatory compliance**

Engine Power Limitation (EPL), Installation of Energy Saving Device (ESD), DWT increase (draft up), Optimization of bulbous bow, propeller and/or engine, etc.



### **C. Development of documents submitted to Class for EEXI verification**

- EEXI technical file, Documents on ship propulsion performance and SFC
- Onboard Management Manual on EPL and Documents on EPL, if EPL is adopted.

For more information about this service, please contact us at :

ClassNK Consulting Service Co., Ltd.

Tel: 03-5226-2290 / Fax: 03-5226-2192 / E-mail: [eexi@classnkcs.co.jp](mailto:eexi@classnkcs.co.jp)